

Lichfield City Council

Donegal House, Bore Street, Lichfield, WS13 6LU



Annual Report 2016-17

To Annual Town Meeting
24 May 2017

Tel: 01543 250011

Email: enquiries@lichfield.gov.uk

Website: www.lichfield.gov.uk

Twitter: @lichfield_cc

ANNUAL REPORT – OVERVIEW

With 28 councillors and just 14 full-time equivalent staff, the City Council is by far the smallest of the three local authorities serving the City area.

The budget set by the Council in January for the 2017/18 financial year was based on a council tax increase of 4% to £57.05 for a Band D property. The amount of precept plus council tax support grant for 2017/18 was set at £700,701 [based upon a precept of £672,917 plus £27,784 local council tax support grant].

Following the significant staffing changes at the City Council in 2015/16, changes in 2016/17 are headlined by the appointment of two new Markets Officers, following the departure of previous Markets staff during 2016, to oversee the City Council's Charter Markets, the Saturday Market and the monthly Farmer's Market.

2016/17 was another busy year for the City Council, with a full programme of civic events, including the Freedom of the City being awarded to DMS Whittington, repairs and improvements to the historic buildings owned by the City Council, strong demand for the conference and wedding facilities offered at the Guildhall, the continuing and increasing popularity of the Samuel Johnson Birthplace Museum, a broad programme of Twinning related activities and the maintenance and improvements to the City Council's 76 acres of open space.

The City Council has continued to progress with its social media presence, with an increase in the number of followers on Twitter and the launch of a dedicated Facebook page for Lichfield's historic Markets.

The draft Neighbourhood Plan for the City, concentrating on employment and economic development themes is due to be submitted for external examination in the coming weeks.

Residents are welcome to attend the Council meetings. Dates of meetings, contact details for City councillors and much more information about the Council and the City are available on our website at www.lichfield.gov.uk



*Cllr David Smedley
Council Leader*



*Cllr Mrs Janice Greaves
Mayor*



*Christopher Moulton
Town Clerk*

Annual Report 2016-17

OPEN SPACES

The City Council's temporary Open Spaces Officer, Nick Burton was made a permanent employee after the departure of the previous post holder following maternity leave.

The Council looks after 76 acres of public open space, 4 miles of footpaths, 12 acres of allotments, 17 bus shelters and 120 footway lights. A major focus is to ensure LCC owned and managed footpaths, churchyards and open spaces are as secure as possible for users and to avoid damage to property. In 2016/17 this work has included felling trees over sub stations so branches don't fall into them, removing scrub to improve the view for road users, removing trees liable to fall into the road and making safe the St. Michaels churchyard for parishioners and the many people who enjoy walking around the grounds.

The City Council has a Service Agreement with Lichfield District Services to undertake most of the routine grounds maintenance on City Council land. As part of the five yearly clause within the agreement, an extensive review of the agreement was undertaken in 2016/17 in conjunction with colleagues from Lichfield District Council. A revised agreement that continues to deliver the level of maintenance expected by the residents of Lichfield was duly signed in March 2017.

The City Council was pleased to play an active part in the 100 year anniversary of the Battle of Verdun. Hundreds of acorns from the Verdun Oak located in the Remembrance Gardens were provided to the Woodland Trust by Lichfield school children.

On 5 October four members from the Parish of Galleywood, a small village in Essex, came to receive two Verdun oak saplings grown on by Lichfield City Council. Mr Paul, the Chairman of Galleywood Council was presented with the plants by the Mayor, Councillor Mrs Sheelagh James. The Town Crier, Mr Ken Knowles read details of Verdun and recited a poem called the Ash & the Oak by Louis Simpson.



Lichfield was once again awarded a Silver Gilt in the Cities in Bloom judging. It isn't just the level of the award that is important; the project involved many different bodies working together - it is a competition that inspires projects across the City, including;

- Involving the Community in planting public spaces including the Canal Trust, Curborough Community Centre and Talent Match
- Enviably hanging baskets that help present our City in the best possible way
- Meadow planting and managing
- Royal Horticultural Society (RHS) sponsored workshops
- This year the City received a grant of £500 from the RHS towards their initiative of 'Greening up the Grey'. Part of this was spent in July on a garden design workshop for unemployed 18 to 24 year olds which proved both useful and fun.
- Building of the Forest School site at Curborough Community Centre. The Area has been regularly used by the Rocklands Special School since its installation in June 2016. In September we were notified by Tesco that we have secured £8,000 funding from the "bags of help" fund. This is to enhance access to the Forest School and to improve the hard standing and wheelchair access.

In October 2016 volunteers from the Countryside & Parks Conservation Group cleared some of the weeds & reeds from beside the brook in the Festival Garden. Nettles are often left to dissuade people from getting too close to the water.

The Conduit Fountain on the Library Corner received a thorough service and repair so it can continue to give pleasure to residents for years to come.

The wall in the Remembrance Garden next to Langton House, which has started to crack, and the balustrade next to Bird Street, which now has some movement are both currently being surveyed.



The arrival of storm 'Doris' in February caused damage to many trees owned or managed by the City Council, most notably to a large tree in St Michaels Churchyard that split and had to be felled, but also to a number of other trees, including over 40 in the LCC plantation north of Eastern Avenue alone. However, the damage during the storm itself is just the beginning as the cost of associated damage and implications to other trees only

becomes clear sometime later. While still being calculated, the extra cost to the City Council attributable to Doris could total over £10,000.

GUILDHALL & COMMUNITY HALLS

The Council owns Darwin Hall, Cruck House, Curborough Community Centre and Boley Park Community Hall, all of which are usually operated by local Management Committees. The Committees manage the buildings, paying the running costs and receiving income from lettings, but with the Council being responsible for maintaining the external fabric.

Key officers of the Management Committee at Boley Park Community Hall stepped down in January 2016, with the City Council taking temporary control of day to day running of the building. The City Council remains hopeful of forming a new Management Committee to return the Hall to community control, but in the meantime several improvements including replacement of high energy use lamps for LED alternatives and the installation of a CCTV system have been completed.

The Council also owns and manages the Guildhall which is let for private and commercial events and for use by local organisations. It also serves as the main venue for concerts organised by Lichfield Arts and is a popular venue for wedding receptions and civil wedding ceremonies. The popularity of the venue continues to grow and the City Council has developed a medium term repair and renovation plan to ensure the building offers appropriate facilities while retaining its historic nature.

The Guildhall has seen considerable improvements during 2016/17, including;

- Over the summer of 2016 the front elevation of the Guildhall was cleaned, woodwork repaired and redecorated and a replacement noticeboard installed. The large stained glass window to the front of the building was also professionally evaluated, cleaned and repaired.
- Less visible though equally important was the repair to the 'stairwell' area of the Guildhall roof. Timbers were found to be rotting due to water ingress, with leaks evident both through the leaded and tiled sections of the roof. The aged lead was replaced with waterproofing membrane, defective timbers replaced, and the adjacent large lantern light overhauled.
- The main toilets in the Guildhall were refurbished and redecorated.

In conjunction with these renovations, comparatively minor improvements are also being undertaken, including the ongoing replacement of light fittings for LED alternatives, the overhaul and redecoration of the Whytmore Room and Minstrels' Gallery and the redecoration of the top floor landing area, all of which have taken place during 2016/17.

The old prison cells, which are open free of charge on summer Saturdays and staffed by a dedicated team of volunteers, continue to be a very popular visitor attraction. A third cell has now been opened with a 'peoples' prison' theme to find out what people would like to see in the cells in the future.

The City Council is committed to ongoing repairs and improvements to the Guildhall, to enhance its appeal to hirers but also to maintain its historic significance to the City.



WEBSITE, ELECTRONIC PAYMENTS AND SOCIAL MEDIA

Development of a much upgraded website for the Samuel Johnson Birthplace Museum has been a key focus in recent months. The site was launched in April 2017 and boasts considerably improved accessibility, more information and will also dovetail with future proposals to make the whole of the Museum's archive available online.

2016/17 was the first full financial year in which the City Council has been able to accept electronic payments. The introduction of card machines has proven to be a great success, helping to boost average spend at the Samuel Johnson Birthplace Museum and also streamlining the booking process and rent collection from market stall holders.

The City Council's social media presence centres on its Twitter account. The number of followers has increased steadily over the year and has proven to be a much valued method of not only advising local residents of upcoming events, but also giving an insight in to some of the City Council's activities and responsibilities.

A dedicated Facebook page has been launched to help publicise the City Council's Charter Markets, Saturday Markets and Farmer's Markets.

DONEGAL HOUSE

Purchased by the City Council in 2012, Donegal House is a Grade II Listed early-Georgian Town house built in 1730 and has been the City Councils' base of operations following its move from Wade St in 2013.

The focus in 2015/16 was to restore the exterior facades of the property to their former glory, but in 2016/17 internal work has been the priority. Two spare rooms located on the top floor of the building were redecorated and offered for rent. Both rooms have now been let to private sector companies, providing a City Centre office base for them, and a source of income for the City Council. Donegal House now hosts five separate organisations, and as such, the existing toilet and kitchen facilities (located on the top floor of the building and limited to three WC's and a small kitchenette) were considered inadequate. Part of the Donegal House basement has now been converted into kitchenette and toilet facilities to help alleviate this issue.

The Donegal House clock, donated by Mrs M A Swinfen Broun in November 1928 was restored by Smith of Derby in 2015, but the workings of the clock (which are located inside Donegal House) were untouched. There have been several issues with the clock losing time over the past few months, seemingly without explanation. As a result, the original workings of the clock have now been replaced with a motor drive to provide greater accuracy. The original workings have been preserved and will be displayed in due course.

SAMUEL JOHNSON BIRTHPLACE MUSEUM

2016/17 was another fantastic year for the Birthplace Museum, welcoming over 17,000 visitors in the calendar year.

The Birthplace Museum organises and hosts several regular groups and one-off events. In 2016/17 these have included;

- A New Writers Group and Latin Classes for Adult Learners
- 'Harmony & Grace' Summer Exhibition
- a 'Somme en masse' painting event, with visitors contributing soldiers for the art installation at the National Memorial Arboretum
- Activities during the Christmas Festival including the Lichfield Regency Dance Group, Lichfield Singers, children's author Lorraine Hellier, and an Angel Trail
- The Birthplace took part in Lichfield Festival week by joining the Ragdoll trail and holding a pop-up poetry event as part of the year of Shakespeare 400 events, with sonnets in surprising places, and was a partner in the March Literature Festival.
- Sharing Stories local history day

The commemorations of the 307th anniversary of Johnson's birth were the most successful since 2009, and formed part of the wider Georgian Heritage Weekend which received excellent feedback from visitors to the City and local partners

Amidst these events and high visitor numbers, structural work has been carried out to the London Life and Introduction rooms, and the Birthplace also received Arts Council England Accreditation, the UK standard for Museums, in March 2016.

London Life and Introduction Rooms

For 2016/17 relatively minor repairs to the London Life and Introduction rooms had been scheduled. However, initial investigations revealed the beam in the London Life Room, which is part of the main frame of the building, had considerable decay with signs of recent water ingress and evidence of death-watch beetle. The timber frame had loose laid brick infills below the window, and once removed it was revealed that the laths to the external render were in a very poor condition and would also require repair. Further investigations revealed similar issues in the 'Introduction' room.

A Structural Consultant was appointed to design steel framework to resolve the issue and the steel was installed during the latter months of 2016. The internal repairs and redecoration of both rooms have now been completed and the rooms reopened to the public.

Recovered Oil Painting

An oil painting of 'Johnson Awaiting an Audience with Lord Chesterfield' (copy after E.M. Ward, c.1848) given to the Museum in 1901 by Alderman J Fowler and noted as missing, was found with conservator Jesse Bruton. The painting was badly damaged in a flood of the Birthplace basement in 1973, which was then used as a collection store.



Upon completion of the repairs in 1975 the painting conservator was requested to keep the painting in his store, but is now retiring and wishes all paintings to be returned. The painting has been stored along with some items that now form part of the Lichfield District Council collection which Mr Bruton has been more recently requested to continue storing, and this may explain the lack of contact in the intervening years.

The picture, having been recovered and reframed, has now been reinstated at the Birthplace Museum. The City Council would like to thank the Johnson Society for their contribution towards the costs of recovering and reframing the picture.

2017 marks the 300th Birthday of Johnson's close friend David Garrick, and events began in February with the launch of a new Garrick ale, in collaboration with Blythe Brewery, Lichfield Arts and Lichfield District Tourism Association, who held a well-attended event at the Birthplace with local partners and businesses represented, including an appearance from David Garrick himself.



The Birthplace also received the excellent news that a project in partnership with Keele University has received Arts and Humanities Research Council funding, meaning that Keele will be holding four fully-funded research seminars in Lichfield about 18th century printing, paper and book culture and based on the Birthplace collections, as well as programming a range of free school and public sessions at the end of their 2-year project in 2018-19.

Much work is underway on the summer Garrick exhibition including taking items to the conservation studio and securing the loan of ceramics, paintings, prints and personal items to display from the Potteries Museum and Art Gallery, and the Garrick Club in London.

MARKETS AND MARKET SQUARE

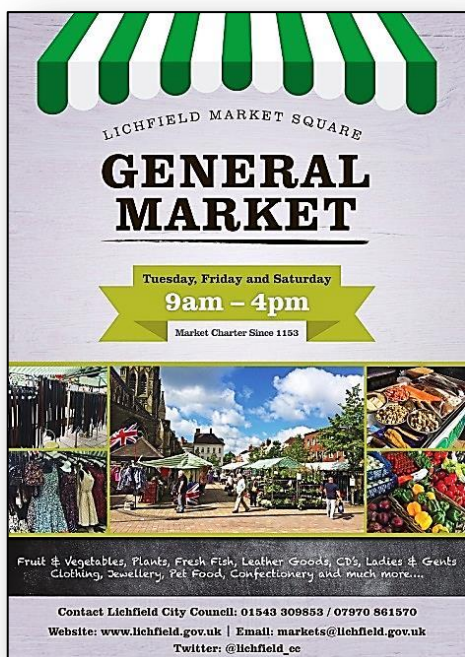
John Beard and Lisa Howard became the City Council's new Markets Officers in 2016 following the departure of the previous Markets Officer and Assistant Markets' Officer.

Lichfield's popular monthly Farmers' Market celebrated its 15th Anniversary on Thursday 2 June. The event was a great success with help from the Mayor, Cllr. Mrs Sheelagh James and Town Crier Ken Knowles who both attended on the day. The celebration cake was creatively baked by one of the Farmers' Market traders, Dream Bakery. Free slices of cake were handed out after the Mayor officially cut the cake at 12 noon. It didn't last very long!

Throughout the day children were treated to free face painting on the Visit Lichfield stall jointly provided by Lichfield City Council and Lichfield District Tourism Team. The Owl Experience was very well received with their wonderful display and free craft activities provided by Colin Manning at Creative Outdoor Learning, making outdoor inspired tree cookies and stick people.



Advertising/Marketing



There has been a national decline in take up of market stalls and general market footfall, and at certain points during the past year Lichfield's markets have been notably affected.

In mid-2016 there were nine permanently empty stalls on a Friday market and six permanently empty stalls on a Saturday market. However, the situation has since improved with the Saturday market once again at full capacity. Friday markets are still not as busy as we would like but there are new applications pending.

To help refresh and promote the Markets, new leaflets to advertise the General Market and Farmers' & Craft Markets were designed and provided to tourist information centres within a 30 mile radius of Lichfield. The new advertising literature also features in a coach touring magazine to help encourage tourism to the City.

Street signs used on market days outside the Guildhall to guide the public to the market square have also been updated with the new look, and we now have lockable poster cases on the market square to promote markets/events to the public on non-market days. Additional 'finger signs' have also been installed on selected City centre signs to help direct footfall to the Square.

The dedicated Lichfield Markets Facebook page is now live and can be viewed at www.facebook.com/lichfieldmarkets. The page includes general market information, historical information and new photos of current stalls. Visitors to the page also have the option to immediately call or message the markets team.

The contract for erecting and dismantling the Market stalls was offered for tender in 2016. All-Fit, who have provided this service to the City Council for several years, were successful once again and we look forward to working with them over the coming years.

A Traders' Liaison meeting was held on 7 November 2016, with Councillor Peter Hitchman replacing Councillor Brian Bacon as Chairman; and a follow up meeting was held on 10 April 2017. Both meetings were constructive and informative, with a further meeting scheduled for November 2017.

The re-paving of the Market Square was completed in October 2016 to a high standard and within the original budget forecast.

CIVIC EVENTS

The Mayor, Councillor Mrs Sheelagh James and Sheriff, Councillor Robert Yardley, completed a very successful year of civic engagements, supported by Deputy Mayor Councillor Mrs Janice Greaves and their consorts.



On 10 September, in accordance with the 1553 Charter, the Sheriff, accompanied by around 60 riders undertook the annual Sheriff's Ride round the city boundary.

Dr Johnson's 307th birthday celebrations were held on 17 September with a service and wreath-laying on the Market Square; and the Freedom of the City was conveyed upon Defence Medial Services (DMS) Whittington on 28 September. This was followed by a military parade through the City Centre with the salute being taken on the Market Square.

Other civic events have included:

- 16 May, Mayor's Banquet
- 29 May, Bower Sunday
- 30 May, Court of Arraye and Bower Procession
- 29 June, Swinfen Broun Bowls Tournament
- 16 July, Mayor at Home
- 13 November, Remembrance Service
- 25 November, Charity Dinner
- 6 December, Mayor's Carols
- 28 February, Shrovetide
- 17 March, Sheriff's Show at the Friary School
- 28 March, Charity Fashion Show

- 11 April Entertainment & Tea
- 22 April, St George's Court

The Mayor and Sheriff's Charity Fashion show was particularly successful, held at the Guildhall on Tuesday 28 March, it raised over £1900.00 for charity, the highest amount raised in the history of the event. The event was supported by House of Fraser, Francesco's, Angela Toon and more than 30 local volunteer models.

In total, the Mayor and Sheriff have raised over £7,000 from their fundraising events which will be distributed to their chosen charities.

Town Criers from across the country descended on Lichfield for the third biennial Lichfield City national Town Criers' competition held on Festival Market Day, Saturday, 2 July. As representative of the host town, our own Ken Knowles was unable to enter, though he did perform the first Shout to set the benchmark for the other competitors. After much deliberation the judges awarded the 2016 trophy to Paul Gough from Nuneaton & Bedworth with a total of 150 points.



The Mayor for 2017/18 is Councillor Mrs Janice Greaves, supported by Councillor David Leytham as Deputy Mayor and Councillor Andrew Smith as Sheriff.

OUTSIDE BODIES

The Council provided over £28,000 in general grants to outside bodies and partner groups during 2016/17.

The Council provides the secretariat for the Lichfield City Forum which brings together representatives from the local councils, residents' associations, businesses and voluntary groups.

TWINNING

Limburg Band at the Fuse Festival

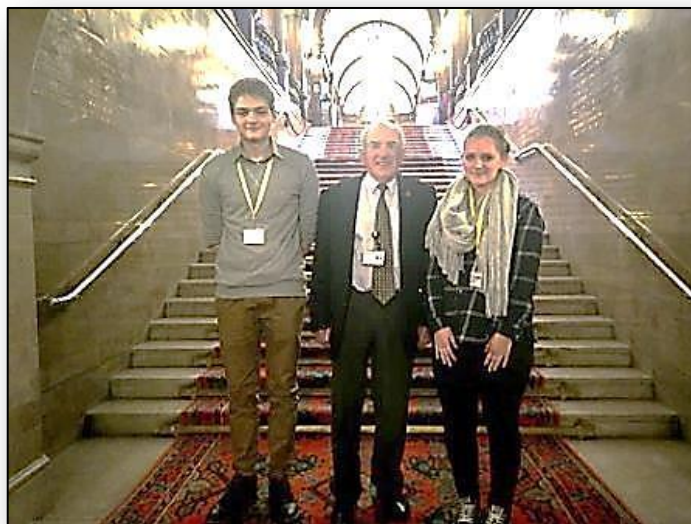
Over the weekend of 8 to 10 July 2016, a band from our twin town Limburg took part in the Fuse Festival at Beacon Park. They arrived early Friday morning, moving into their accommodation at Wade Street Church, kindly provided by Reverend Ian Hayter, were then warmly welcomed by the Mayor, Cllr Sheelagh James in the early afternoon, followed by a City tour. Their concert was on Sunday morning and was very well received by a good crowd of visitors.



They were overwhelmed by the friendly reception from the City of Lichfield and drove back on Monday morning with many fond memories of the weekend.

Limburg Council Apprentices

Lena and Dennis, two public office apprentices from Limburg City Council, visited Lichfield in October for one week, to experience the duties of public organisations and their work in the Lichfield Community. They spent time in the City Council, District Council, Staffordshire County Council, Erasmus Darwin House, Library, Records Office, Tourist Information Centre and the Samuel Johnson Birthplace.



They very much enjoyed their stay in Lichfield and would like to thank everyone involved for their time in explaining their workplaces and duties. They compiled a report on their Lichfield work experience for the Limburg Mayor and City Council, which is published on Limburg's council website. A press release on their time in Lichfield was also published in Limburg's local newspaper.

Lloyds Bank Work Experience

Klara Schreiber, the daughter of Limburg District Music School director Peter Schreiber, completed a 3 week work placement at Lloyds bank from 23 January to 10 February 2017. She was welcomed by the Mayor, Cllr Sheelagh James and the Bank Manager of Lloyds Bank, Mr. Ben Rowell.

Klara had a very interesting and varied experience at the bank and went back to Germany to start her higher education programme with the German Bundesbank (Central Bank) in Frankfurt.

She very much enjoyed her time in Lichfield and was overwhelmed by the warm and inclusive welcome she received from everybody involved, the members of the Twinning Association and especially all the staff and management at Lloyds Bank.



Erasmus+ Programme

In February 2017, two male students, Florian and Yannick from Limburg's Adolf-Reichwein-Schule, took part in a European Erasmus+ funded work experience programme at the Queens croft High School helping students with learning difficulties. Both Yannick and Florian study social care at the Limburg College and the Erasmus+ scheme enabled them to spend part of their required vocational work experience in another EU member state. At the end of March, two Erasmus Mentors from the Limburg College organised an Erasmus staff visit to Lichfield to establish personal contact and evaluate their stay.

Ring Twinning Anniversary

The 25th anniversary celebrations of the ring twinning between Ste. Foy, Limburg and Lichfield will be held in Ste. Foy during the weekend of 6th October to 9th October 2017. For further information about this important event please contact the City Council's Twinning Officer on 01543 309857.

CHRISTMAS LIGHTS

The City Council has provided all of the Christmas illuminations in Lichfield City with support from the Chamber of Trade for many years. For 2016 the Lichfield BID provided additional Christmas lighting along buildings in Tamworth St, making a welcome addition to the City Council's installations. Following the cancellation of the switch-on event in 2015 due to high winds, the weather in 2016 proved to be much kinder with the event going ahead as planned. A large crowd was in attendance and there were several events throughout the City Centre including a Christmas Market.

Once again the cast of the Garrick Christmas Pantomime played a key part, with Rebecca Keatley (Cbeebies) and children's competition winners Amelia Dutton and Archie Nesbitt

turning on the lights. The event also featured music from the Emma Jonson Band and Johnny and the Speedos, plus carols sung by the Christ Church Community School Choir.

ELECTORAL MATTERS

Following the resignation of Councillor Mike Thompson, a vacancy arose for a City Councillor for Stowe Ward. A Bye Election was held on Thursday 4 May 2017, resulting in the vacant position being filled by Jim McGrath representing the Conservative party. The political composition of the Council remains 26 Conservative, 1 Liberal Democrat and 1 Labour.

PLANNING

The District Council is the Planning Authority, but the City Council is consulted on all planning applications submitted for the city area. The City Council's Planning Committee met on 17 occasions, and examined and commented on 249 planning applications; only 8 of which were decided differently from the comments of the City Council.

During 2017/18 Planning Committee meetings will be held monthly rather than every three weeks as was previously the case. This change puts the City Council in line with the District Council and will allow for a more streamlined approach to the City Council's input to the planning process. A full calendar of Planning Committee meeting dates can be found on the City Council's website.

The Council continues to progress a Neighbourhood Plan for the City with independent examination of the Plan due to be undertaken over the coming weeks. The next stage will be a local referendum, which is scheduled to take place later in 2017. Further information will be provided through the City Council's 'City View' supplement in City Life and on the City Council's website.

STAFFING

Following the considerable staffing changes during 2015/16, 2016/17 has been relatively stable. New appointments include:

- John Beard & Lisa Howard – Markets Officers
- Nick Burton – Open Spaces Officer

FINANCE

The budget set by the Council in January for the 2017/18 financial year was for a council tax of £57.05 for a Band D property, which was a 4% increase on 2016/17. The comparison between 2016/17 and 2017/18 budget is detailed below:

<u>Net Expenditure</u>	<i>BUDGET 2016/17</i>	<i>BUDGET 2017/18</i>
SERVICE AREAS	£	£
<i>Parks and Footpaths</i>	175,000	208,166
<i>Guildhall</i>	50,000	62,530
<i>Community Centres</i>	15,000	12,182
<i>Markets</i>	-50,000	-29,885
<i>Civic</i>	70,000	81,684
<i>Grant Aid/Partnerships</i>	50,000	50,006
<i>Arts/Tourism/Twinning</i>	65,000	59,989
<i>Johnson Birthplace Museum</i>	75,000	80,704
<i>Democratic Services</i>	85,000	88,794
<i>Investment Interest</i>	-1400	-110
<i>Loan Charges</i>	0	0
<i>Agency</i>	-12,000	-18,615
<i>Repairs and Renewals</i>	130,000	129,463
<i>Capital Projects</i>	0	0
SUB TOTALS	651,600	724,910
PRECEPT + LTCSG	674,763	700,701
TOTAL (To)/From balances	(23,163)	(24,209)

<u>Balances and Reserves</u>	<i>BUDGET 2016/17</i>	<i>BUDGET 2017/18</i>
	£	£
<i>Opening Balance (1 April)</i>	790,068	798,403
<i>To/(From) balances</i>	23,163	(24,209)
<i>Closing Balance</i>	813,231	774,194
<u>Closing balance held as:</u>		
<i>Repairs/Renewals (Revenue)</i>	353,000	353,000
<i>General Revenue Reserves</i>	460,231	421,194
<i>Capital Funds</i>	0	0
TOTALS	813,231	774,194

CITY COUNCIL MISSION STATEMENT:

‘To improve the quality of life of residents of Lichfield City’

TO BE ACHIEVED BY:

- Making best use of the resources and powers available to us to provide high-quality cost-effective services to help meet the needs and wishes of the residents
- assisting and encouraging other bodies to provide such services

KEY OBJECTIVES:

- 1 To help residents enjoy high-quality social, recreational, and cultural facilities, and to maintain or improve the standard of these facilities
- 2 To encourage and promote the economic and commercial vitality of the city
- 3 To protect and improve the high-quality environment of the city and promote sustainable development to meet the needs of present and future generations
- 4 To preserve the ancient traditions and unique identity of the city
- 5 To represent the views and wishes of the citizens of Lichfield and to promote the interests of the city for the betterment of the local community
- 6 To help to create a socially inclusive and caring community which embraces all its residents, irrespective of age, culture, income, race or religion, and which seeks to develop their well-being, knowledge, understanding, and mutual co-operation.

* *

How to Contact Lichfield City Council

Lichfield City Council, Donegal House, Bore Street, Lichfield, WS13 6LU

Tel: 01543 250011 Email: enquiries@lichfield.gov.uk website www.lichfield.gov.uk

Officer Contacts

Responsibility	Name	Tel:
Town Clerk	Christopher Moulton	01543 250011
Deputy Town Clerk	Tony Briggs	01543 309852
Finance	Alison James	01543 309855
Admin/Planning	Celia Freeman	01543 309858
Civic Matters	Sarah Wallace	01543 309854
Open Spaces	Nick Burton	01543 309851
Internal Audit	Graham Keatley	01543 250011

Responsibility	Name	Tel:
Twinning	Gabriele Lasch-Burden	01543 309857
Markets	John Beard Lisa Howard	01543 309853
Johnson Birthplace	Joanne Wilson	01543 264972
Guildhall Room Hire	Helen Winter	01543 309850
Reception	Jane Varley	01543 250011

City Council Members

Councillor		Party	Ward	Address	Telephone
Jeanette Allsopp	★	Con	Curborough	House A, St John's Hospital, St John St, WS13	01543 256114
Bob Awty	★	Con	Leomansley	5 Seckham Road, WS13 7AN	07587 068000
Brian Bacon		Con	Leomansley	102 High Street, Chasetown, WS7 3XG	01543 670374
Norma Bacon	★	Con	Leomansley	102 High Street, Chasetown, WS7 3XG	01543 670374
Deb Baker	★	Con	St John's	30 Longbridge Road, WS14 9EN	07785 246 391
Gwyneth Boyle	★	Con	Chadsmead	Berry Hill House, 8 London Rd, WS14 9EJ	01543 251684
John Brooks		Lab	Curborough	37 Leyfields, WS13 7NJ	01543 252662
Bernard Cocksey		Con	St John's	28 Balmoral Close, WS14 9SP	01543 255228
David Dundas		Con	Chadsmead	45 Gaia Lane, WS13 7LW	01543 417497
Iain Eadie	★	Con	Leomansley	177 Walsall Road, WS13 8AE	01543 268157
Janet Eagland	★★	Con	Boley Park	3 Alder Close, WS14 9UT	01543 257102
Colin Greateorex	★★	Con	Burton Old Rd	49 Borrowcop Lane, WS14 9DG	01543 416677
Janice Greaves		Con	St John's	9 Chapel Lane, WS14 9BA	01543 256025
Peter Hitchman		Con	Stowe	22 Swallow Croft, WS13 7HF	01543 327222
Sheelagh James		Con	St John's	4 Gorse Lane, WS14 9HQ	01543 251450
David Leytham	★	Con	Curborough	45 Francis Road, WS13 7JX	01543 252122
Jayne Marks		Con	Pentire Road	64 Cornfield Drive, WS14 9UG	01543 256083
Tim Matthews	★	Con	St John's	8 Wentworth Drive, WS14 9HN	01543 255729
Jim McGrath		Con	Stowe	3 Tregony Rise, WS14 9SN	
Brian McMullan		Con	Garrick Road	2 Smithfield Rise, WS13 6SG	01543 325084
Paul Ray	★	Lib Dem	Chadsmead	25 Christchurch Lane, WS13 8BA	01543 250395
David Smedley	★	Con	Stowe	64 Ryknild Street, WS14 9XP	01543 410389
Andrew Smith	★	Con	Leomansley	4 Friary Road, WS13 6QL	07795 661123
Christopher Spruce	★	Con	St John's	22 Lombard Street, WS13 6DR	01543 258120
Antony Thompson		Con	Stowe	2 Hayworth Road, WS13 6AL	01543 253822
Lesley Warfield		Con	Chadsmead	30 Fecknam Way, WS13 6BY	01543 300934
Mark Warfield	★	Con	Boley Park	30 Fecknam Way, WS13 6BY	01543 300934
Robert Yardley		Con	Boley Park	64 Cornfield Drive, WS14 9UG	01543 256083

★ = also member of Lichfield District Council

✱ = also member of Staffordshire County Council