

Lichfield City Council

Donegal House, Bore Street, Lichfield, WS13 6LU



Annual Report 2017-18

To Annual Town Meeting
23 May 2018

Tel: 01543 250011

Email: enquiries@lichfield.gov.uk

Website: www.lichfield.gov.uk

Twitter: @lichfield_cc

ANNUAL REPORT – OVERVIEW

2017/18 was a year of unexpected change and tragedy for the City Council. Just a month after the last Annual Town Meeting, the City's Town Clerk, Christopher Moulton died suddenly and unexpectedly at the age of just 53. Christopher's loss is still keenly felt and he is greatly missed. Mrs Kim Wilkins, the manager of Curborough Community Centre also died in 2017. Her contribution to the Community Centre was immense and she too will be greatly missed. And finally, in April 2018, longstanding and much respected Councillor Mrs Jeanette Allsopp died after a short illness.

Christopher's Deputy, Tony Briggs became Town Clerk in September 2017, with the former Civic Officer, Sarah Thomas becoming Deputy Town Clerk in December. Lucy Clarke has been appointed to the Civic Officer role. Other staffing appointments remain unchanged.

The City Council's Leader, David Smedley resigned in January 2018 after serving both the City and District Councils for many years. Councillor Bernard Cocksey, formerly the Deputy Leader, was appointed as Leader by the City Council on 29 January 2018 with Councillor Mark Warfield appointed as Deputy Leader.

With 28 councillors and just 14 full-time equivalent staff, the City Council is the smallest of the three local authorities serving the City area. The budget set by Council for the 2018/19 financial year is based on a precept of £60.50 for a Band D property and totals £717,905.

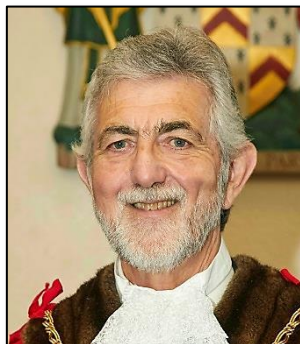
2017/18 was another busy year for the City Council, with a full programme of civic events, repairs and improvements to the historic buildings owned by the City Council, strong demand for the conference and wedding facilities offered at the Guildhall, the popularity of the Samuel Johnson Birthplace Museum, a broad programme of Twinning related activities and the maintenance and improvements to the City Council's 76 acres of open space.

The draft Neighbourhood Plan for the City, concentrating on employment and economic development themes achieved success at referendum in February 2018 and is now part of the development framework for the City and carries legal force.

Residents are welcome to attend the Council meetings. Dates of meetings, contact details for City councillors and much more information about the Council and the City are available on our website at www.lichfield.gov.uk



*Cllr Bernard Cocksey
Council Leader*



*Cllr David Leytham
Mayor*



*Tony Briggs
Town Clerk*

Annual Report 2017-18

OPEN SPACES

The Council looks after 76 acres of public open space, 4 miles of footpaths, 12 acres of allotments, 17 bus shelters and 120 footway lights. A major focus is to ensure LCC owned and managed footpaths, churchyards and open spaces are as secure as possible for users and to avoid damage to property. The City Council has a Service Agreement with Lichfield District Services to undertake most of the routine grounds maintenance on City Council land.

Financed by Tesco through their plastic bag fund, the work at Curborough Community Centre to re-tarmac the patio behind the building has been completed. Two new paths have also been completed at the same time to improve access to the Forest School which is used by a number of groups such as the Rockland School and the 'Young Carers Group'.



The late Kim Wilkins, the former manager of Curborough Community Centre was heavily involved in this project and the final plan was agreed with her before she became ill. She will be sadly missed by many, but it is hoped that the memorial garden in her name located at Curborough Community Centre will serve as a fitting tribute.

A key 'Open Sapce' priority is supporting the Blooming Lichfield Group in the Royal Horticultural Society's Cities in Bloom award. In previous years Lichfield has been awarded a silver gilt medal which is a tremendous accolade, but it was felt that with more work and events this year a better result would be possible. Many volunteers from various groups such as the Friends of the Historic parks, Canal Trust and the CPCG group were on hand to litter pick and improve the City beds before the judging day.

The judging day went well with a hospitable start at Swinfen Hall despite the pouring rain. The judges were able to enjoy the recently renovated Swinfen walled garden, the community garden at St. Andrews House, the Green Flag awarded Beacon Park, Kate McRae's internationally known wildlife garden and the Beacon Street allotments, amongst others.

We were delighted to be informed that the City had been successful in achieving a 'Gold' award, which was presented to the Mayor, Councillor Mrs Janice Greaves at the the Cities in Bloom awards at Warwick Castle in September.



It was the result of a lot of hard work by all the members of the Blooming Lichfield Group, the District Council Maintenance team and others in the City. It was wonderful to see everyone's efforts being recognised with such a coveted award.

Certain Green Spaces and footpaths seem to come up regularly with concerns from residents. If these are recurring problems then more work will be done to achieve a more permanent solution. This will be more cost effective in the long term. It was for this reason that the canopy of trees in Fecknam Way and Johnson Close were lifted by 4m which may seem extreme but means they should not need attention for 5 years or so.

In a September meeting with the Lichfield Allotment Association it was confirmed that the site of the former Dovehouse Fields allotments was to be surrendered. The area has stood vacant for some time due to a number of issues including site access difficulties, overgrown trees and vegetation and rampant 'horses tail'.

Following a leaflet drop to local residents a committee was set up which included some of the original allotment holders to discuss ideas of how this site could be put to good use. The resulting proposals were put formally to Council and received an enthusiastic response with permission being granted for the proposed work and also some assistance in clearing the site from the City Council.

The official opening of the site took place on 6 April and it is hoped that this is the start of a wonderful community based future for this parcel of land, with allotment space available later in 2018 and grand plans for the next few years.



The City remains a popular place to film, in January 2018 the BBC1 programme “Inside Out” used the Remembrance Garden with the purpose of encouraging people to get ‘out & about’ and visit Lichfield. Poolside Walk was also used by students from South Staffordshire College as a set for a short film to be shown later in the year.

There have also been some smaller scale improvements and ongoing maintenance including the replacement gate for the Pinfold on Stafford Rd being installed, an overhaul and repainting of the benches in the Remembrance Garden (with further overhauls of the City Council owned benches to follow in 2018/19). Early in 2018 the area around the Friary clock tower was resurfaced. This follows repairs and improvements to the lighting and removal of some surrounding shrubbery that was carried out during 2016/17. The final result has been very successful and also promises to reduce the level of maintenance required in years to come.



The wall in the Remembrance Garden next to Langton House, which has started to crack, and the balustrade next to Bird Street, which now has some movement are both due to be repaired imminently at the time of compiling this report.



GUILDHALL & COMMUNITY HALLS

The Council owns Darwin Hall, Cruck House, Curborough Community Centre and Boley Park Community Hall, all of which are usually operated by local Management Committees. The Committees manage the buildings, paying the running costs and receiving income from lettings, but with the Council being responsible for maintaining the external fabric.

Since January 2016 the City Council has taken control of Boley Park Community Hall after key members of the management committee stepped down after many years' service. Unfortunately, new volunteers have not been forthcoming during 2017/18. The City Council remains hopeful of forming a new Management Committee to return the Hall to community control, but in the meantime additional improvements are scheduled for early 2018/19 following hirer comments received over the past 12 months.

The Council also owns and manages the Guildhall which is let for private and commercial events and for use by local organisations. It also serves as the main venue for concerts organised by Lichfield Arts and is a popular venue for wedding receptions and civil wedding ceremonies. The popularity of the venue continues to grow and the City Council has developed a medium term repair and renovation plan to ensure the building offers appropriate facilities while retaining its historic nature.

The Guildhall saw considerable improvement in 2016/17 and this continued in 2017/18:

- The catering kitchen on the first floor has been extended by removing the previous store room; in addition the awkward step in to the room has been replaced by a ramp. These improvements, together with new flooring, redecoration and much improved lighting have generated a much better facility than was previously available.
- Following repairs to an area of penetrating damp towards the rear of the room caused by defective rainwater goods at Donegal House, the Guildroom has been comprehensively redecorated, together with the addition of a dado rail to help reduce incidences of scuffs to the walls caused by chairs. The ambience of the room is much improved, though there remains much more to be done including the renovation of the dated adjacent kitchen which is scheduled for 2018/19.
- The window blinds in the main hall have been replaced with newer and better performing equivalents.

In conjunction with these renovations, comparatively minor improvements are regularly undertaken; these include the replacement of light fittings with LED alternatives and ad hoc redecoration.

The old prison cells, which are open free of charge on summer Saturdays and staffed by a dedicated team of volunteers, continue to be a very popular visitor attraction. A third cell was opened for the 2017/18 season and the fourth and final cell has now been opened for 2018/19.

The City Council is committed to ongoing repairs and improvements to the Guildhall, to enhance its appeal to hirers but also to maintain its historic significance to the City. The repair and renewals programme for 2018/19 promises a further year of improvement for one of the City's most cherished buildings.

DONEGAL HOUSE

Purchased by the City Council in 2012, Donegal House is a Grade II Listed early-Georgian Town house built in 1730 and has been the City Councils' base of operations following its move from Wade St in 2013.

Donegal House is now home to four organisations other than the City Council, all of whom contribute rent to the City Council to assist with the costs of upkeep of the building. Following external façade works in 2015/16 and considerable internal work in 2016/17, the roof of the building was the main focus for 2017/18. The repairs to the roof were preventative as no leaks had been identified, but it was clear that maintenance was required. Repairs included the replacement of several missing or broken tiles, an overhaul of timber work, extensive relaying and repointing of ridge tiles and the replacement of several perished bricks.

SAMUEL JOHNSON BIRTHPLACE MUSEUM

Johnson's Birthplace welcomed 18,000 visitors in the 2017-2018 operating year. The main theme for many of the Museum's events and activities over 2017 was the 300th Birthday of David Garrick, Johnson's pupil and great friend. The Birthplace worked in partnership with local and national organisations, and events included working with a local brewery to create a special beer; performances of 'the Golden Moment' and 'Peg & Davey' written and directed by local playwright David Titley; talks, and city-wide celebrations on Staffordshire Day and over Johnson's Birthday weekend.



The centre-piece of the year was the major exhibition 'Johnson & Garrick: a Friendship in Constant Repair'. Curated in partnership with Dr Johnson's House in London, it included items from both collections as well as loans from the Potteries Museum and Art Gallery and the Garrick Club. The exhibition opened in Lichfield and travelled to London, where 35 artworks from the Birthplace collection were on display from October to February.

In addition to the Garrick programme, other special events included an evening with storyteller Cath Edwards on the lives of Georgian Women, a Christmas festival weekend, and a lively family programme including school holiday craft events and an 18th century-themed magic show. Other local partnership projects included being part of the Food Festival, Literature Festival and providing a venue for the L2F Folk Festival. A new play at

the Garrick Theatre 'Letters to Emma' by Carolyn Scott-Jeffs was inspired by items in the Birthplace manuscript collection. Items from the collection were loaned to Lichfield Cathedral for their JMW Turner and Elias Ashmole exhibitions.

As well as an increasing number of school visits, the Birthplace seeks to develop relationships with higher education institutions to raise the profile of the Museum with researchers and students. An ongoing project with Keele University will lead to a series of workshops and lectures about printing history being hosted in Lichfield in 2019 for academics, school pupils and the general public, and the Birthplace continues to be part of the University of Birmingham's 'History in the



Workplace' module, providing 6-month placements for second year students to research particular parts of the Museum's collections. So far the coins and medals, and the autographed books collections have been the focus of this ongoing collaboration.

Collection care projects in this period included: conservation work on a Bureau Bookcase owned by the Boswell family, two prints of David Garrick, and an 18th century Granddaughter Clock. A copy after E.M. Ward's 'Johnson Awaiting an Audience with Lord Chesterfield' was returned to display, following support from the Johnson Society to fund the re-framing.

The Grade I listed building receives regular care and maintenance in a planned programme of minor works, and work carried out this year included addressing areas of water ingress in the attic area of the house, using the opportunity to survey the roof and carry out further minor repairs to windows and replacing missing roof tiles. The historic lime ash floor in the attic was repaired, areas of damaged plaster were filled and repaired in the stairwell and the building exterior was cleaned.



2017-2018 also saw the start of work on a significant redevelopment project for the Museum's displays and visitor facilities. The last full re-display of the house was completed in 1989/1990, and one further room in 2005, when the museum received approximately 3,200 annual visitors. Now with over 18,000 visitors, LCC is keen to ensure that the changing needs and expectations of museum visitors, new approaches to museum interpretation and access, and knowledge about caring for a collection and historic building are represented.

To these ends, the Johnson Birthplace Advisory Committee committed to a redevelopment project and additional budget was made available to SJBM in the 2017/18 financial year to recruit a consultant to review the existing Museum and present options for development. In January 2018 Susan Dalloe Consultancy began work on their report in consultation with the Museums & Heritage Officer, Town Clerk, Leader of the Council, Birthplace Advisory Committee, Museum staff and volunteers.

MARKETS AND MARKET SQUARE

Many markets remain under great pressure nationally, with falling trader attendance and footfall. The Tuesday Charter Market is currently the most popular Lichfield Market with more traders wanting to attend than there are spaces available.

Unfortunately trying to persuade Traders to stand at the Market on Fridays or Saturdays where we currently have vacancies is difficult as they attend other markets. The number of empty stalls on a Saturday has reduced however, and the Friday market has also benefited from new traders.

In order to encourage both traders and footfall, a number of actions have been undertaken. These include:

The popular tri-fold market leaflets have been redesigned to reflect the style of our posters and other leaflets and provide a more up to date look and feel. They have been distributed them to local libraries, tourist information centres and hotels.




Front Cover

Front cover opened

Leaflet Fully Opened

Back Cover

A detailed Trader leaflet to complement our general markets leaflet has also been produced. The leaflet is in black and white and can be printed in-house or by Traders for distribution locally, or at other markets and events which they attend.

		THANK YOU FOR YOUR SUPPORT.					
CROSSED RODS Fishing Tackle & Bait Friday & Saturday		SIMON DAVIES Quality Italian Clothing At Affordable Prices Friday & Saturday		JAN'S QUALITY FOOD Homemade Pies & Pasties Eggs, Jams, Chutney's & Pickles Friday		THE LIQUORICE STALL Specialising in liquorice from around the world. Tuesday & Farmers	
R.S. DOMESTIC APPLIANCE SPARES Including Vacuum Cleaner Spares Friday & Saturday		THE CURRY MAN Homemade Curries & Cooking Sauces Friday & Saturday		ROOFRIM LTD Supply & Fit All Types Of Home Improvement Tues, Fri & Sat		BOURNE ELECTRONICS Domestic Appliances & Spares Tuesday	
TAKHAR TRADING Men's & Ladies Wear, Hi Vis, Socks & Underwear Tuesday & Saturday		SUGAR & SPICE DIABETIC DELIGHTS Sweets & Sugar Free Dietary Requirements Friday & Saturday		LICHFIELD COUNTRY MARKET Cakes, Jams & Craft Items Friday		KENYA MASAI UK Genuine Handcrafted Masai Tribal Products Saturday	
OWEN'S FISH Fresh Fish & Shellfish Tuesday & Friday		WOODHOUSE GREEN NURSERIES Locally Grown Bedding Plants, Shrubs, Perennials & Trees Tues, Wed & Farmers		PURPLE DAISY JEWELLERY Fashion Jewellery, Brooches, Scarves and Hair Accessories Saturday		THE PURPLE ROSE Stunning Costume Jewellery Tuesday	
MR KITTS PET STALL Wild Bird & Specialist Seeds, Natural Dog Treats, Pet Beds Friday & Saturday		UNIQUE CERAMICS "Open To Takeaway" Staffordshire Ceramics Dinnerware, Microwave Safe Saturday & Farmers		STUART 'THE RUGMAN' Great Rugs At Competitive Prices Saturday		HELEN DARK Fantastic Range Of Clearance Goods. Something For All Ages Saturday	
CHASE INK - THE INK MAN Premium Quality Compatible Ink Cartridges & Toners Tues, Fri & Sat		GREETINGS CARDS For All Occasions Also Gift Wrap and Accessories Tues, Fri & Sat		DAISY TRIP Quirky And Unusual London Fashions Saturday		JOHNNY SHOES Family Footwear For All Saturday	
C & J LEATHERGOODS Bags, Belts, Purses & Wallets Travel Goods & Chamois Leathers Tues, Fri & Sat		PAUL SMITH FRUIT Fresh Quality, Locally Grown Fruit, Veg & Salads Tues, Wed, Fri & Sat		FIELD-ELICIOUS A True Taste Of Africa. Premium Beef Biltong & Driedvors Saturday		READ ALL ABOUT IT Paperback Books, Children's Books, Maps, Children's Comics, Magazines & Entertainment Products. Friday	
MARTYN SHAW Bespoke Framing Service Prints, Tapestry, Canvas & More Friday & Saturday		BLUESTONE PLANTS Garden Centre Quality Market Prices Friday & Saturday		CLOUD CHARGERS Rozzy Khan Vaping Supplies & Fidget Spinners Saturday		MUER COSMETICS High Street Make Up At Low Cost Prices Saturday	
				OVER THE GARDEN WALL Antiques & Collectables Vintage / Records / Ephemera Saturday		SILVER SPARKLES Quality Silver Jewellery, Gift Sets, Scarves & Hair Accessories. Saturday	
				KITCHEN CORNER Bone China & Kitchenware Tuesday		GARY'S BOOKS & CO'S Used Paperback & Hardback Books Tuesday	

Front

Centre

Back

The BID have begun to promote the Farmers' Market via Social Media (this is addition to our own Social Media activity). Jono from Jono's Tourism took some great photos in April, which we have been given permission to use on our Facebook page to promote future markets.

As part of a National Lottery promotion, the Friday market took part in a "Random Acts of Kindness" event. On Friday 4 August National Lottery Butlers were placed on the market offering to help customers with packing and even paying for some purchases. This was very popular with Traders and the public alike and it is unfortunate that this event was a 'one off' as it was a great success.

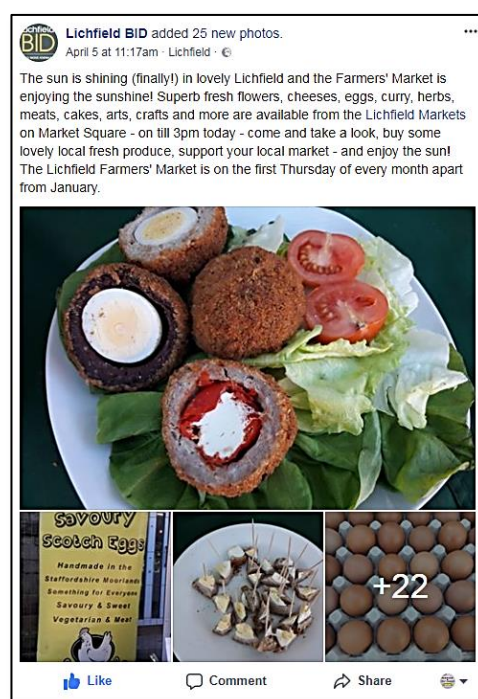
The markets are a key part of Lichfield's culture and heritage and the City Council will continue to develop new initiatives in conjunction with Traders in order to advertise and promote the markets in 2018/19.

Market Closures

The Winter of 2017/2018 brought a number of storms with strong winds, snow and ice. In December there were two market cancellations and one early closure. The severe weather conditions at the beginning of March caused a further 4 market cancellations, including the March Farmers' Market. The Arts & Craft Fair also had to cancel their booking. This compares to three cancellations during the whole winter period in 2016/2017 and six cancellations during the winter of 2015/2016. Both the Traders and the City Council hope that repayment for what has been a relatively severe Winter comes in the form of an exceptional Summer!

Non-Market events

There are now several craft fairs utilising the Square on Sundays & Mondays and various coach firms are also booking the square during the week for tour promotions. Cockerhoop Promotions held their first Grub Club on 28 March, which included hiring the Market Square for use as a seating and entertainment area. The evening was a success and the Square has been hired to repeat the event on the last Wednesday evening of every month through to October. Additionally, there is currently at least one Sunday booking every week through to the Middle of June 2018.

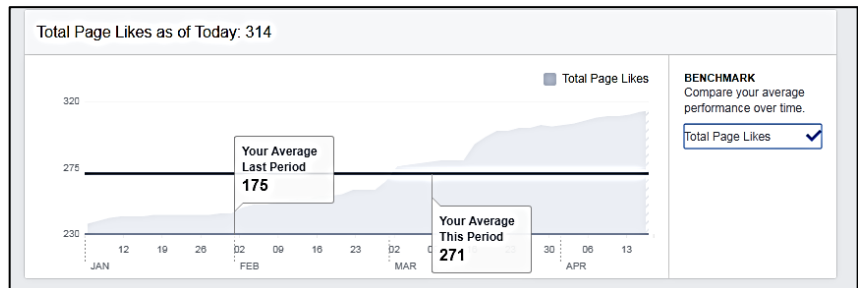


Market Traders Liaison Committee

A Traders' Liaison meeting was held on 6 November 2017 and a further meeting on 16 April 2018, with Councillor Peter Hitchman as Chairman. Both meetings were constructive and informative, with the next meeting scheduled for November 2018.

Facebook

The dedicated Lichfield Markets Facebook page has been live for some months now and has proven to be very popular and an excellent aid to informing the public about cancelled markets and answering general enquiries from the public, current traders and potential traders alike. The page can be viewed at www.facebook.com/lichfieldmarkets and includes general market information, historical information and new photos of current stalls. Visitors to the page also have the option to immediately call or message the markets team.



CIVIC EVENTS

The Mayor, Councillor Mrs Janice Greaves and Sheriff, Councillor Andrew Smith, completed a very successful year of civic engagements, supported by Deputy Mayor Councillor David Leytham and their consorts.



Councillor Mrs Greaves was proposed as Mayor by Councillor Mrs Gwyneth Boyle (pictured to the Mayor's left, below) and Seconded by Councillor Mrs Jeanette Allsopp (pictured to the Mayor's right). Councillor Mrs Allsopp sadly died in April 2018.



On 9 September, in accordance with the 1553 Charter the Sheriff, Councillor Andrew Smith accompanied by around 60 riders undertook the annual Sheriff's Ride round the City boundary. The Ride was completed in good time and in mostly favourable weather.



Dr Johnson's 308th birthday celebrations were held on 23 September with a service and wreath-laying on the Market Square. Other civic events have included:

- 15 May, Mayor's Banquet
- 28 May, Bower Sunday
- 29 May, Court of Array and Bower Procession
- 29 July, Mayor at Home
- 27 September, Swinfen Broun Bowls Tournament
- 12 November, Remembrance Service
- 5 December, Mayor's Carols
- 13 February, Shrovetide
- 14 March, Charity Fashion Show
- 23 March, Sheriff's Show at the Friary School
- 9 April Entertainment & Tea
- 23 April, St George's Court

The Mayor and Sheriff's Charities for 2017/18 were Guide Dogs for the Blind and Staffordshire Blood Bikes. A series of well attended charity events during the year plus other donations led to a total charity fund in excess of £10,000 which will shortly be split evenly between the two charities. The Mayor and Sheriff would like to take this opportunity to thank all those who contributed in any way to this fantastic total.



On Saturday January 13 the 3rd Mercian Regiment paraded their old colours through the City prior to laying them up in the Cathedral. The Vice Lord Lieutenant of Staffordshire, Mr Graham Stow and the Mayor took the salute outside the Guildhall. The Civic party then processed to the Cathedral for the poignant service.

The Mayor for 2018/19 is Councillor David Leytham, supported by Councillor Peter Hitchman as Deputy Mayor and Mr Michael Mullarkey as Sheriff.

OUTSIDE BODIES

During 2017/18 the Council gave grants totalling £28,555 to the following organisations as indicated, with grants to organisations marked * being made under Section 137 of the Local Government Act 1972, this being expenditure which in the opinion of the Council is in the interests of the whole area or some or all of the inhabitants and which will bring benefit in a manner commensurate with the expenditure:

No	Organisation	£	No	Organisation	£
1	Lichfield Arts	4,100	23	Lichfield Twinning Association	100
* 2	Citizens Advice South East Staffs	3,500	24	Speakers' Corner Lichfield	0
3	Lichfield Greenhill Bower	3,000	25	Lichfield City Gardening Guild	0
4	Erasmus Darwin Foundation	2,500	26	Darwin Walk Trust	50
5	Lichfield Festival	2,000	27	Lichfield Rail Promotion Group	50
* 6	Alzheimer's Society	2,000	28	Parkinson's Disease Society	1560
7	Lichfield Mysteries Community Arts	300	29	Soroptimist International Lichfield & District	0
8	Voluntary Transport for the Disabled	1,000	30	St Mary's in the Market Square	1,000
* 9	Lichfield Trent Valley First Responders	1,000	31	Re-Cycle	500
* 10	City of Lichfield Royal British Legion	520	32	City of Lichfield Friends	500
11	Fusion Credit Union	400	33	Friends2Friends	500
* 12	Lichfield & District Live At Home Scheme	500	34	Lichfield Computer & Social Group	0
13	Lichfield District Council Proms In The Park	500	35	Lichfield Cricket Club Junior Section	500
14	Lichfield Chamber of Trade & Commerce	250	36	The Palace Singers	0
15	Lichfield Festival of Music	250	37	Abacus Pre-School Playgroup	300
16	Open Door of Hope	250	38	Lichfield Bowling Club	0
17	5 th Lichfield (St Chads) Brownies	250	39	Lichfield & Burntwood Social Club for the Blind	250
* 18	Lichfield Darby & Joan Club	75	40	St Mary's in the Market Square	0
19	St Michael's Church Choir & Camas Group	150	41	Dr Milley's Hospital	500
20	Embroiderers' Guild Lichfield Branch	0	42	Lichfield Ladies Club	0
21	Lichfield Sinfonia	100			TOTAL
22	Worshipful Company of Smiths	100			28,555

TWINNING

On 15 May, Lichfield's new Mayor, Cllr Janice Greaves, was invested at the Annual Meeting of the City Council in the Guildhall. Janice, daughter of Mrs Doris English, former Mayor of Lichfield herself and a founding member of the Twinning Agreement, has close connections to our twin towns and was very pleased to welcome eight guests and friends from Limburg, who made a special trip to Lichfield to join in her celebrations.

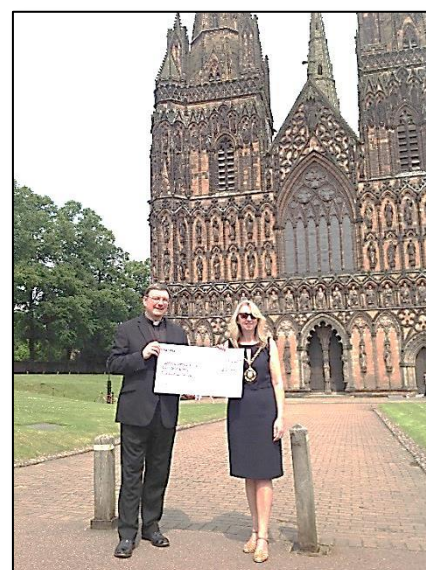


Our German Twin Town of Limburg celebrated their 800th anniversary. As part of these celebrations they organised an international Twinning Table Tennis Tournament, to which 7 members of the Lichfield Table Tennis club travelled. The tournament was held between all four twin towns, i.e. Lichfield, Ste. Foy, Oudenburg (Belgium) and Limburg itself. The event concluded with a large barbeque party on Saturday evening.



Sixteen Cathedral Girl Choristers, aged from 11 to 15 travelled to Sainte Foy-les-Lyon, from 10 to 14 July. There was a Civic reception for the Choir upon arrival and they gave various concerts in Churches around Ste. Foy and Lyon, as well as participating in joint musical activities with Schola, the Girls' Choir from Lyon's Cathedral. They also had the chance to experience Bastille Day celebrations in France first hand just before returning to Lichfield.

This activity was being funded by the girls themselves, their parents and Cathedral musicians through fund-raising events. Lichfield City Council also provided support, with a Twinning Grant of £200 towards the cost of the exchange.





Over the weekend of 6 to 9 October, Lichfield celebrated its 25th Twinning Anniversary with Sainte Foy-les-Lyon and Limburg a. d. Lahn. Nearly 80 guests from both Lichfield and Limburg travelled to Ste. Foy to take part in the celebrations, which were partly funded by the EU. In total, 63 French host families accommodated the English and German guests.

The Ring Twinning Celebrations in Ste. Foy were a chance for old friends to meet up and for new links and friendships to be established. There were social events and excursions, but above all the chance to meet French people and experience a slice of the French way of life. Language was not a problem and everyone enjoyed seeing the wide range of sporting and cultural activities which Ste. Foy has to offer. Lichfield's Table Tennis and Friary Tennis Clubs took part in competitions between the three Cities and Lichfield's very own Town Crier, Ken Knowles, opened the weekend ceremony to resounding applause from the audience.



The highlight of the weekend was the friendship evening, where approximately 300 guests joined the three City Mayors in the anniversary celebrations. The French host families together with their guests from Lichfield and Limburg enjoyed the occasion to get to know one another over a nice meal in a relaxed atmosphere with lovely musical interludes. The three Mayors spoke about their cities' benefits and experiences from Twinning and exchanged gifts to commemorate 25 years of collaboration.

During the weekend, there was a very informative business meeting to discuss past exchange experiences and ideas for future cooperation. All three Mayors expressed a firm commitment to Twinning and the Limburg Mayor, Dr. Marius Hahn, issued an invitation for the next official meeting in Limburg, to be held in September 2020. Especially impressive was the church service on Sunday morning, which was held in 3 languages and thus contributed to a very special atmosphere in a full church. The Reverend Ian Hayter from Wade Street Church in Lichfield led the English part of the service.

On Saturday morning, the French MEP Francoise Grossetete, spoke about 30 years of the EU's Erasmus programme and how to access it. Overall, the weekend was a great success and underlined the cultural opportunities and importance of Twinning.

Limburg's Twinning Association celebrated their 30th anniversary on 10 December with a gala dinner at Limburg's prestigious Dom-Hotel with nearly 100 guests. They incorporated the theme of Lichfield's Garrick300 into their programme and invited David Titley from the Samuel Johnson Birthplace Museum to give a presentation as David Garrick at the event.



A number of members from the Lichfield Twinning Association were also invited to join in the celebrations and had a truly memorable weekend in Limburg. Peter Barrett, chairman of the Lichfield Twinning Association, together with all the Lichfield guests, thoroughly enjoyed the great occasion and returned home to Lichfield "with renewed enthusiasm for the cause of Twinning". In addition, Peter Walker's illuminations of the Limburg Cathedral and the Lichfield Cathedral Boys' joint concert with their Limburg counter parts, completed the December anniversary celebrations.

This year saw a record number of student exchanges to Lichfield, mostly funded through the Erasmus+ scheme. These included a 3 week placement at Thompson Travel Agency in Bore Street in June of 2017; a 1 week placement at various Council offices in Lichfield and Stafford in October 2017; three student 5 week placement at Springfields Pre-School and Day Nursery in Beacon Street in January 2018; and one student 4 week placement at Springfields Nursery and Friends2Friends at Cruck House in February 2018.



PLANNING

The District Council is the Planning Authority, but the City Council is consulted on all planning applications submitted for the city area. The City Council's Planning Committee met on **13** occasions, and examined and commented on **296** planning applications; only **19** of which were decided differently from the comments of the City Council.

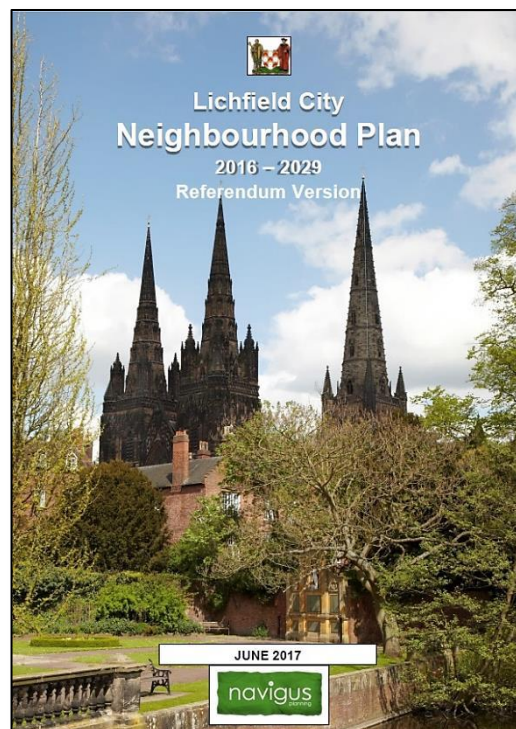
During 2017/18 Planning Committee meetings were held monthly rather than every three weeks as was previously the case. This change puts the City Council in line with the District Council and allows for a more streamlined approach to the City Council's input to the planning process. A full calendar of Planning Committee meeting dates can be found on the City Council's website.

LICHFIELD CITY NEIGHBOURHOOD PLAN (LCNP)

Neighbourhood Planning was introduced by government as part of its Localism agenda and is a way for communities to decide the future of the places where they live and work in conformity with the strategic policies in the Local Plan (as developed and adopted by Lichfield District Council).

The Lichfield City Neighbourhood Plan referendum was held on 22 February 2018. Of the 4225 votes cast, 57% were in favour, the LCNP has therefore passed the referendum stage by majority vote and become part of the Planning framework for the City.

The LCNP focuses on economic and employment issues rather than housing. The City is well positioned to increase its economic base, with a highly skilled workforce and excellent road and rail links. The City also boasts numerous attributes and attractions that encourage tourism.



Where a Parish Council has a neighbourhood plan in place it receives 25% of Community Infrastructure Levy (CIL) contributions from a developer as opposed to 15% without a Neighbourhood Plan. The existence of an adopted Neighbourhood Plan ensures as much CIL money as possible is retained by the Parish in which the development is taking place, to be spent in consultation with residents and in accordance with the priorities laid out in the Neighbourhood Plan.

The first CIL payment is due to be made to the City Council at the time of compiling this report. While it will be a relatively small sum, it will nevertheless represent monies that are to be spent in the City in consultation with residents to provide improvements that are needed and are in conformity with the vision set out in the Neighbourhood Plan. There will of course be many competing demands for this funding and a small cross-party committee of City Councillors has been established to consider how this money is allocated. Residents are strongly encouraged to have their say and are invited to make written submissions to the Town Clerk at the City Council Offices at Donegal House, Bore St or by email to enquiries@lichfield.gov.uk to assist in informing this process.

The Lichfield City Neighbourhood Plan can be downloaded from the City Council's website at: https://www.lichfield.gov.uk/Neighbourhood_Plan_1085.aspx

CITY COUNCILLORS

During 2017/18 there were two by-elections, both held in Stowe Ward following the resignations of Councillors J McGrath and D Smedley, the former City Council Leader. Following these by-elections the City Council welcomed two new Members, Councillor Mrs Angela Lax and Councillor Jo Grange, both representing the Conservative party. Councillor B Cocksey, the former Deputy Leader under Councillor Smedley was appointed Leader by the City Council in January 2018, and Councillor M Warfield was appointed as Deputy Leader at the same meeting.

One of the City Council's longest serving Members Councillor Mrs Jeanette Allsopp sadly died on 8 April 2018. Jeanette was a popular and knowledgeable local figure who had represented the City for a total of 31 years.

The current balance of the City Council is therefore 25 Conservative, 1 Labour, 1 Liberal Democrat and one vacancy.

CITY COUNCIL STAFF

Christopher Moulton, the City's Town Clerk died unexpectedly in June 2017. His death led directly to several staffing changes. New appointments include:

- Tony Briggs - Town Clerk
- Sarah Thomas - Deputy Town Clerk
- Lucy Clarke - Civic Officer

FINANCE

The budget set by the Council in January for the 2018/19 financial year was for a council tax of £60.50 for a Band D property, which was a £3.45 increase on 2017/18. The major contributing factor to this rise is the loss of Local Council Tax Support Grant (LCTSG) from 2018/19 onwards. The comparison between 2017/18 and 2018/19 budget is detailed overleaf.

<u>Net Expenditure</u> SERVICE AREAS	BUDGET 2017/18 £	BUDGET 2018/19 £
<i>Parks and Footpaths</i>	208,166	208,866
<i>Guildhall</i>	62,530	72,515
<i>Community Centres</i>	12,182	14,451
<i>Markets</i>	-29,885	-31,325
<i>Civic</i>	81,684	80,802
<i>Grant Aid/Partnerships</i>	50,006	50,133
<i>Arts/Tourism/Twinning</i>	59,989	61,971
<i>Johnson Birthplace Museum</i>	80,704	80,437
<i>Democratic Services</i>	88,794	91,318
<i>Investment Interest</i>	-110	-200
<i>Loan Charges</i>	0	0
<i>Agency</i>	-18,615	-18,515
Total Service Cost	595,447	610,453
<i>Repairs and Renewals</i>	129,463	107,452
<i>Capital Projects</i>	0	0
SUB TOTALS	724,910	717,905
PRECEPT + LTCSG	700,701	717,905
To/(From) Balances	(24,209)	0

<u>Balances and Reserves</u>	BUDGET 2017/18 £	BUDGET 2018/19 £
<i>Opening Balance (1 April)</i>	798,403	690,758
<i>To/(From) balances</i>	(24,209)	0
<i>Closing Balance</i>	774,194	690,758
<u>Closing balance held as:</u>		
<i>Repairs/Renewals (Revenue)</i>	353,000	353,000
<i>Rent Deposit Deed Reserve</i>	0	1,100
<i>Parish Election Reserve</i>	0	40,000
<i>General Revenue Reserves</i>	421,194	296,658
<i>Capital Funds</i>	0	0
TOTALS	£774,194	£690,758

<u>Council Tax Analysis</u>	BUDGET 2017/18	BUDGET 2018/19
<i>Precept</i>	£672,917	£717,905
<i>LCTSG</i>	£27,784	£0
<i>Precept + LCTSG</i>	£700,701	£717,905
<i>Apportioned Tax Base</i>	£11,795	£11,886.2
RESULTANT BAND D TAX	£57.05	£60.50

CITY COUNCIL MISSION STATEMENT:

‘To improve the quality of life of residents of Lichfield City’

TO BE ACHIEVED BY:

- Making best use of the resources and powers available to us to provide high-quality cost-effective services to help meet the needs and wishes of the residents
- assisting and encouraging other bodies to provide such services

KEY OBJECTIVES:

- 1 To help residents enjoy high-quality social, recreational, and cultural facilities, and to maintain or improve the standard of these facilities
- 2 To encourage and promote the economic and commercial vitality of the city
- 3 To protect and improve the high-quality environment of the city and promote sustainable development to meet the needs of present and future generations
- 4 To preserve the ancient traditions and unique identity of the city
- 5 To represent the views and wishes of the citizens of Lichfield and to promote the interests of the city for the betterment of the local community
- 6 To help to create a socially inclusive and caring community which embraces all its residents, irrespective of age, culture, income, race or religion, and which seeks to develop their well-being, knowledge, understanding, and mutual co-operation.

* *

*This report is dedicated to the memory of the late
Mr Christopher Moulton (Town Clerk) and Councillor Mrs Jeanette Allsopp.*



How to Contact Lichfield City Council

Lichfield City Council, Donegal House, Bore Street, Lichfield, WS13 6LU

Tel: 01543 250011 Email: enquiries@lichfield.gov.uk website www.lichfield.gov.uk

Officer Contacts

Responsibility	Name	Tel:
Town Clerk	Tony Briggs	01543 250011
Deputy Town Clerk	Sarah Thomas	01543 309854
Finance	Alison James	01543 309855
Admin/Planning	Celia Freeman	01543 309858
Civic Matters	Lucy Clarke	01543 309852
Open Spaces	Nick Burton	01543 309851
Internal Audit	Graham Keatley	01543 250011

Responsibility	Name	Tel:
Twinning	Gabriele Lasch-Burden	01543 309857
Markets	John Beard Lisa Howard	01543 309853
Johnson Birthplace	Joanne Wilson	01543 264972
Guildhall Room Hire	Helen Winter	01543 309850
Reception	Jane Varley	01543 250011

City Council Members

Councillor		Party	Ward	Address	Telephone
Bob Awty	★	Con	Leomansley	5 Seckham Road, WS13 7AN	07587 068000
Brian Bacon		Con	Leomansley	102 High Street, Chasetown, WS7 3XG	01543 670374
Norma Bacon	★	Con	Leomansley	102 High Street, Chasetown, WS7 3XG	01543 670374
Deb Baker	★	Con	St John's	30 Longbridge Road, WS14 9EN	07785 246391
Gwyneth Boyle	★	Con	Chadsmead	Berry Hill House, 8 London Rd, WS14 9EJ	01543 251684
John Brooks		Lab	Curborough	37 Leyfields, WS13 7NJ	01543 252662
Bernard Cocksey		Con	St John's	28 Balmoral Close, WS14 9SP	01543 255228
David Dundas		Con	Chadsmead	45 Gaia Lane, WS13 7LW	01543 417497
Iain Eadie	★	Con	Leomansley	177 Walsall Road, WS13 8AE	01543 268157
Janet Eagland	★★	Con	Boley Park	3 Alder Close, WS14 9UT	01543 257102
Joanne Grange	★	Con	Stowe	1 Bulldog Lane, WS13 7LN	07768 636898
Colin Greateorex	★★	Con	Burton Old Rd	49 Borrowcop Lane, WS14 9DG	01543 416677
Janice Greaves		Con	St John's	9 Chapel Lane, WS14 9BA	01543 258278
Peter Hitchman		Con	Stowe	22 Swallow Croft, WS13 7HF	01543 327222
Sheelagh James		Con	St John's	4 Gorse Lane, WS14 9HQ	01543 251450
Angela Lax		Con	Stowe	Wissage Hill House, Covey Close, WS13 6BS	01543 250390
David Leytham	★	Con	Curborough	Fairfields, The Moor, Fradley, WS13 8PP	01283 790804
Jayne Marks		Con	Pentire Road	64 Cornfield Drive, WS14 9UG	01543 256083
Tim Matthews	★	Con	St John's	8 Wentworth Drive, WS14 9HN	01543 255729
Brian McMullan		Con	Garrick Road	2 Smithfield Rise, WS13 6SG	01543 325084
Paul Ray	★	Lib Dem	Chadsmead	25 Christchurch Lane, WS13 8BA	01543 250395
Andrew Smith	★	Con	Leomansley	4 Friary Road, WS13 6QL	07795 661123
Christopher Spruce	★	Con	St John's	22 Lombard Street, WS13 6DR	07879 714003
Antony Thompson		Con	Stowe	2 Hayworth Road, WS13 6AL	01543 253822
Lesley Warfield		Con	Chadsmead	30 Fecknam Way, WS13 6BY	01543 300934
Mark Warfield	★	Con	Boley Park	30 Fecknam Way, WS13 6BY	01543 300934
Robert Yardley		Con	Boley Park	64 Cornfield Drive, WS14 9UG	01543 256083
Vacant			Curborough		

★ = also member of Lichfield District Council

✳ = also member of Staffordshire County Council